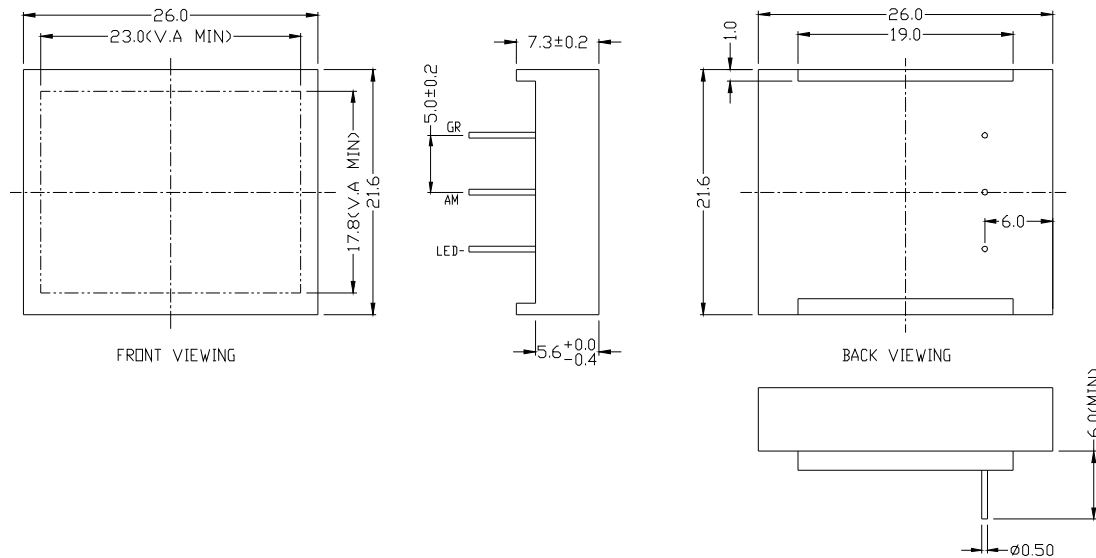
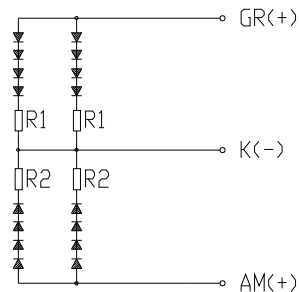


1、 MECHANICAL OUTLINE(Unit: mm, Unspecified Tolerance $\pm 0.2\text{mm}$) Color: Yellow Green

Amber



2、 CIRCUIT DIAGRAM (LED 2 x 50 = 100 dies)



3、 SOLDERING CONDITIONS:

- I The Soldering Temperature is $260^{\circ}\text{C} \pm 5^{\circ}\text{C}$ and Soldering Time should be less than 3 sec, and soldering iron power should be less than 30W.
- I The soldering point should be farther than 1.6 mm from body.

4、ABSOLUTE MAXIMUM RATINGS

Item	Symbol	Conditions	Max.		Unit
			Yellow Green	Amber	
Absolute maximum forward current	Ifm		50	50	mA
Peak forward current	Ifp	1 msec plus 10% Duty Cycle	1200	1200	mA
Reverse Voltage	Vr		10	10	V
Power dissipation	Pd		600	600	mW
Operating Temperature Range	Topr		-20~+70		°C
Storage Temperature Range	Tstg		-20~+75		°C

5、ELECTRICAL-OPTICAL CHARACTERISTICS: (T=25°C)

Item	Symbol	Yellow Green			Amber			Unit	Condition
		Min.	Typ.	Max.	Min.	Typ.	Max.		
Forward Current	If	20	30	40	20	30	40	mA	Vf=12V
Forward Voltage	Vf	11.8	12	12.1	11.8	12	12.1	V	If=30mA
Reverse Current	Ir			40			40	μA	Vr=10V
Luminance	Lv		30			40		cd/m ²	If=30mA
Peak wave length	λp		100			120		nm	If=30mA